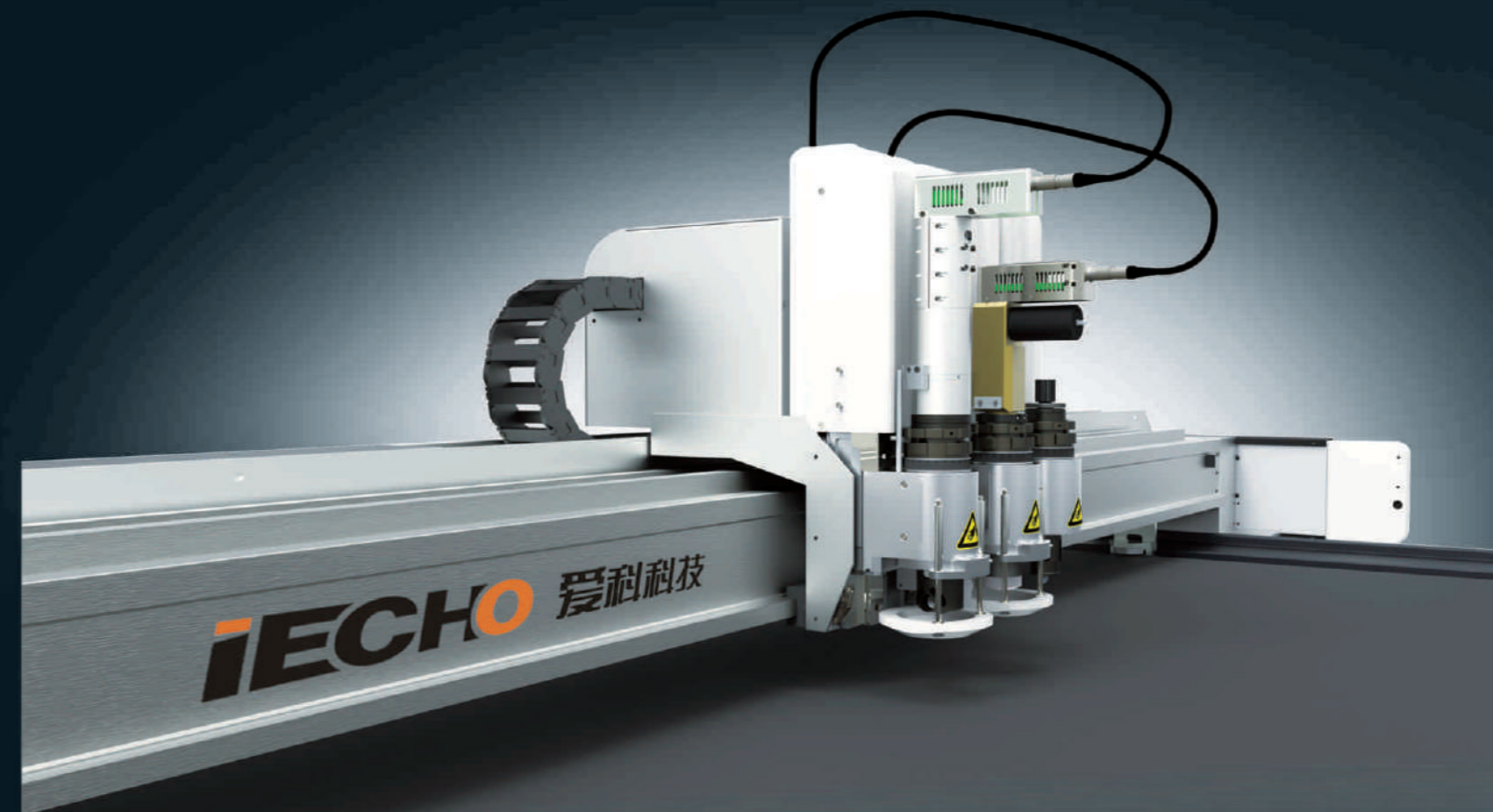


**iECHO**

## TK4S Large Format Cutting System



INOVATIVNE TEHNOLOGIJE D.D.



+386 1 586 79 33



[www.mds-it.si](http://www.mds-it.si)



[info@mds-it.si](mailto:info@mds-it.si)

MDS Inovativne Tehnologije d. d.  
Leskoškova cesta 9e, 1000 Ljubljana

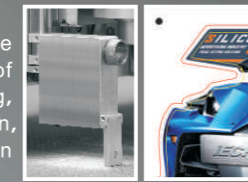


# New Advantages

- 1| The controlling boxes are designed at the side of the machine body, which make it easier to make maintenance.
- 2| The cables wiring is neater and cleaner, which make it easier to check cables.
- 3| More space under the machine, can put vacuum pumps under the machine to save room space.

## IECHO Automatic Camera Positioning System

Equipped with high precision CCD camera, the system realizes automatic position on all kinds of materials, automatic camera registration cutting, and solves problems of inaccurate manual position, and print distortion, thus to complete procession task easily and precisely.



## Higher Efficiency Cutting Head

Cutting speed can reach to 1.5m/s, which is 4-6 times of traditional manual way. Intelligent control system of Z-axis height decreases cutting tools' moving distance, shortens working time and thus improves the production efficiency.



## X Axis Two Motors

For the extreme wide beam, use the two motors with the balance technology, make the transmission more stable and accurate.



## Diversified Cutting Tools

In order to meet different industrial cutting requirements, the cutting head can be flexibly chosen from the standard head, punching/notching head, and the milling head.



## AKI System

The depth of cutting tool can be controlled accurately by the automatic knife initialization system.



## Dual Beams Cutting Systems

Equipped with double beams cutting system, can highly increase your production efficiency.



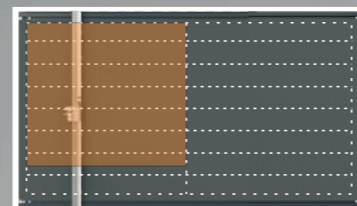
## IECHO Continuous Cutting System

With the intelligent conveyor system, to achieve cutting and picking up the samples at the same time. It totally saves the labor cost and improves the efficiency significantly.



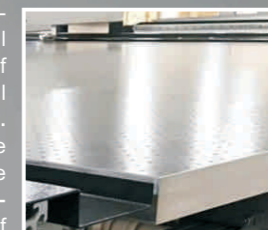
## Flexible Working Area

The modularized working area can be added according to customers' requirements.



## Aviation Aluminum Honeycomb Panel

Application of aviation aluminum honeycomb panel, making the inside air of panel moves freely, ensures the stability of structure without the influence of thermal expansion and contraction effect. Meanwhile, mutually constrained dense cells respectively and averagely bear the force from the panel to ensure the high-level flatness of the working table even of quite large size.



## IECHO Safety Device

Anti-collision protective device and Infrared blocking device ensures operator's safety at most high-speed working condition.



## IECHO Motion Control System

IECHO motion control system, CUTTERSERVER is the center of cutting and controlling, enables smooth cutting circles and perfect cutting curves.



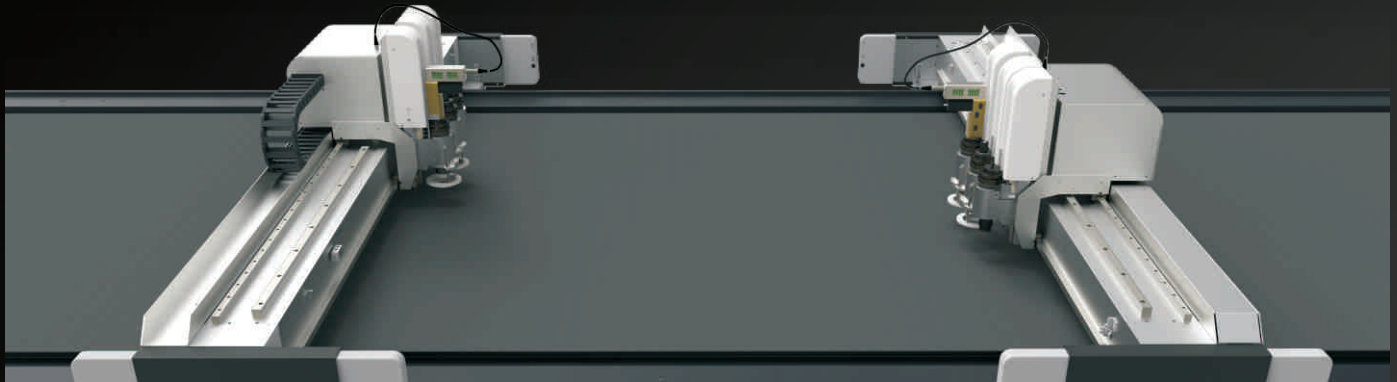
## Software

Processing of larger sizes of materials can be realized by page cutting function.



# TK4S Large Format Cutting System

TK4S Large format cutting system provides best choice for multi-industries automatic processing. Its system can be precisely used for full cutting, half cutting, engraving, creasing, grooving and marking. Meanwhile, precise cutting performance could meet your large format requirement. User-friendly operating system will show you a perfect processing results.



TK4S Dual Beams Large Format Cutting System

## SIZE

Width \ Length	2500mm	3500mm	5500mm	Customized Size
1600mm	TK4S-2516 Cutting Area: 2500mmx1600mm Floor Area: 3300mmx2300mm	TK4S-3516 Cutting Area: 3500mmx1600mm Floor Area: 4300mmx2300mm	TK4S-5516 Cutting Area: 5500mmx1600mm Floor Area: 6300mmx2300mm	Based on the standard size of TK4S, can customize the machine according to customer's special requirements.
2100mm	TK4S-2521 Cutting Area: 2500mmx2100mm Floor Area: 3300mmx2900mm	TK4S-3521 Cutting Area: 3500mmx2100mm Floor Area: 4300mmx2900mm	TK4S-5521 Cutting Area: 5500mmx2100mm Floor Area: 6300mmx2900mm	
3200mm	TK4S-2532 Cutting Area: 2500mmx3200mm Floor Area: 3300mmx4000mm	TK4S-3532 Cutting Area: 3500mmx3200mm Floor Area: 4300mmx4000mm	TK4S-5532 Cutting Area: 5500mmx3200mm Floor Area: 6300mmx4000mm	
Other Sizes	TK4S-25265 (L*W)2500mmX2650mm Cutting Area: 2500mmx2650mm Floor Area: 3891mm x3552mm		TK4S-1516 (L*W)1500mmX1600mm Cutting Area: 1500mmx1600mm Floor Area: 2340mm x 2452mm	

## PARAMETERS

Vacuum Pump	1-2 Units 7.5kw	2-3 Units 7.5kw	3-4 Units 7.5kw
Beam	Single Beam	Dual Beams (Optional)	
MAX.Speed	1500mm/s		
Cutting Accuracy	0.1mm		
Thickness	50mm		
DataFormat	DXF, HPGL, PLT, PDF, ISO, AI, PS, EPS, TSK, BRG, XML		
Interface	Serial Port		
Media	Vacuum System		
Power	Single phase 220V/50HZ Three phase 220V/380V/50HZ-60HZ		
Operating Environment	Temperature 0°C-40°C Humidity 20%-80%RH		

## Sign & Advertising/ Packaging

TK4S large format cutting system provides a total cutting solution to the advertising industry , Especially in terms of PP paper, KT board, Foam board, stickers, corrugated board, honeycomb and other materials processing. It can be equipped with high-speed milling spindle for acrylic, aluminum plastic plate and other hard materials processing. with the automatic rolls/sheets feeder, it could full-time automatic production.



## Composites

TK4S large format cutting system can replace hand-painting, hand-cutting and other traditional crafts in the composite material products processing, especially for irregular, irregular patterns and other complex samples, effectively improved the production efficiency and cutting accuracy.



## Automobile Upholstery

TK4S large format cutting system provides a total solution for a wide variety of materials used in the automobile industry including textiles, PVC and many other interior components.



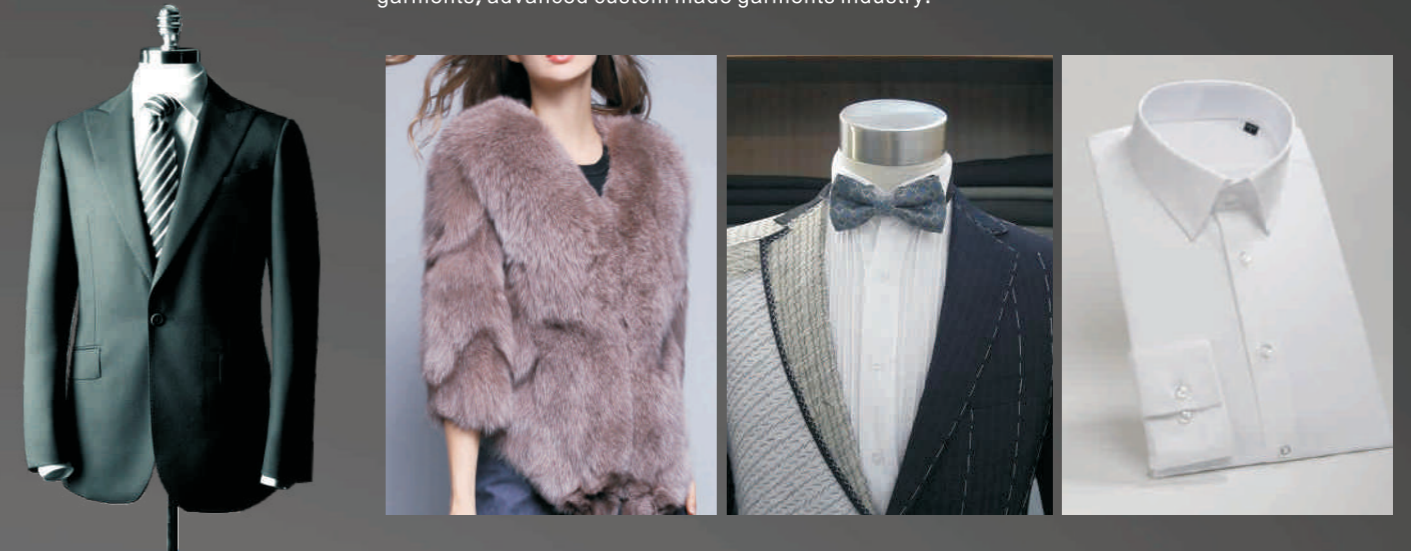
## Furniture & Textile

TK4S large format cutting system provides an integrated cutting solution to the home textile industry, not only significantly improved the textile utilization and processing efficiency, but also can effectively improve product's quality. To achieve high efficiency of products, low supplies cost , and quality optimization.



## Garment & Textile

Equipped with Driven Rotary Tool(DRT), Notch & Punching Tool(PPT) and automatic correction system, TK4S large format cutting system provides an integrated cutting solution to Brand garments, advanced custom made garments industry.



## Other Industries

TK4S large format cutting system is widely applied to global non-metallic industries , such as footwear, luggage, membrane, sporting goods, toys, wind power, medical supplies etc. In order to provide professional and stable integrated cutting solution for non-metal industrial customers.

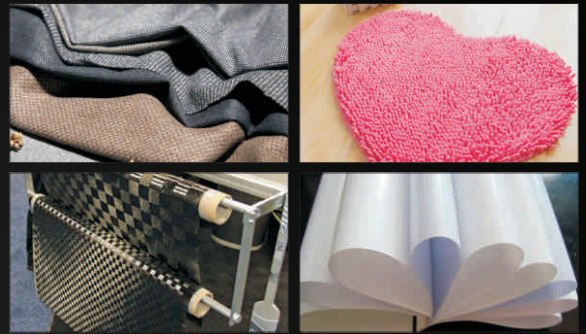




**IECHO EOT** Electronic Oscillating Knife for cutting soft and medium density materials, available with 1mm stroke.



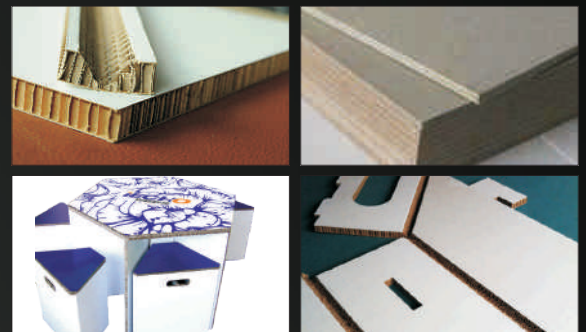
**IECHO PRT** Powerful Rotary Tool for cutting textiles.



**IECHO UCT** Universal Cutting Tool, used for through cutting materials with thicknesses up to 5 mm at high speed at low cost.



**IECHO V-CUT** The V-Cut tool is the perfect tool for producing complex structural designs from foam core or sandwich board materials. The tool can be set for cutting 5 different angles for different cutting requests. The 5 different angles are 0°, 15°, 30°, 45° respectively.



**IECHO KCT** Kiss Cut Tool, for cutting vinyl, foil, films, thin paper, cardboard and other thin materials.



**IECHO CTT** The CTT Tool is used for creasing corrugated materials. A selection of creasing tools allows perfect creasing in many substrates.



**IECHO RZ** The router operates at speeds up to 60,000 RPM, and delivers solid performance on a wide range of rigid and flexible materials. Highly precise engraving capabilities include kiss cutting. Efficient dust extraction helps maintain a clean healthy work environment.



**IECHO POT** The Pneumatic Oscillating Tool is an air driven tool operating at high frequency to cut materials. Stroke is adjustable up to 8 mm, and is capable of cutting hard dense materials. Blades are available to permit cutting materials up to 50 mm thick.

