

Technical Specification



KINGT
金谷田

MODEL		KGT-LE-2513(Gen6)			
Printhead		3~8 Printheads (5pl)			
Printing Technology		Piezoelectric inkjet,variable dot printing,grayscale technology			
X&Y Motor		Industrial high quality servo motors x 3			
Printing Resolution		635x900 DPI / 635x1200 DPI			
Printing Direction		Uni and Bi-direction			
Media	Maximum Print Size	2500mm(Width)x1300mm(Length)			
	Table Size	2600mm(Width)x2000mm(Length)			
	Standard Thickness	100mm			
	Weight	50kgs/m ²			
Ink Type		UV LED curable inks			
Ink Configuratioin		CMYK+WW(Standard), CMYK+LcLm+WW CMYK+WW+VV(Optional) CCMMYYKK CMYK+LcLm+WW+VV(Optional)			
Ink Cartridge Size		1500ml			
Ink Supply System		Negative Pressure System (NPS) with Automatic Ink Supply			
Curing System		Daul UV LED lamps,water cooling system			
Image Process Software		ColorGate(Bundle Version)			
File Format		Tiff,Jpeg,Postscript,EPS,PDF,DCS2.0			
Interface		USB2.0			
Printer Dimesions(X*Y*Z)		4550x2120x1450mm			
Wooden Box Dimensions(X*Y*Z)		4750x2330x1650mm			
Net Weight		1500kgs			
Printing Speed (Bi-direction, Single color, Feathering:122)					
Printheads	Resolution	Pass	High speed	Middle speed	Low speed
3 x Ricoh G6	635x900 dpi	4 Pass	26 Sqm/h	24 Sqm/h	22 Sqm/h
	635x1200 dpi	6 Pass	20 Sqm/h	18 Sqm/h	16 Sqm/h
	635x1200 dpi	8 Pass	17 Sqm/h	15 Sqm/h	13 Sqm/h
Operating Conditions					
Temperature		25~30°C			
Relative Humidity		40-60%			
Electricity Request					
Power		7000W(including vacuum system)			
Power requirements		Input voltage:220-240V,single-phase,50/60Hz			
Warranty		One year limited warranty(Please contact your local dealer for accurate data)			



KGT-LE-2513G6

High-end UV Flatbed Printer

Ricoh Gen6 Print Head

Hi-precision,Hi-speed,Flawless design

- Equipped with the newest Ricoh Gen6 printheads, the machine provides superior print quality at high production speed. Featuring industrial-strength components, the machine is built to last and is an excellent choice for advanced users.
- UV Flatbed printers offer endless business opportunities to all sorts of industries including advertising, gift & premium, home decoration, packaging, cosmetics, etc.
- ColorGate RIP provides an excellent color management, gives brilliant colors and stunning print result.



MDS Inovativne Tehnologije d. d.
Leskoškova cesta 9e, 1000 Ljubljana



+386 1 586 79 33



www.mds-it.si



info@mds-it.si



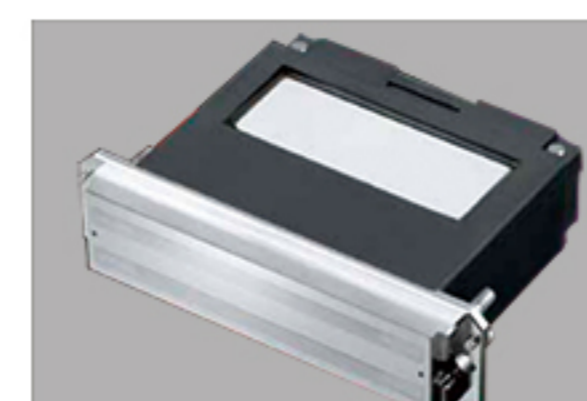
KGT-LE-2513G6

High-end UV Flatbed Printer

Magnetic encoder increases printing stability and accuracy.



Features



1. Staggered Ricoh Gen6 heads based
Staggered print head for simultaneous white and color printing. CMYKWV+Neon M+Neon Y(optional).



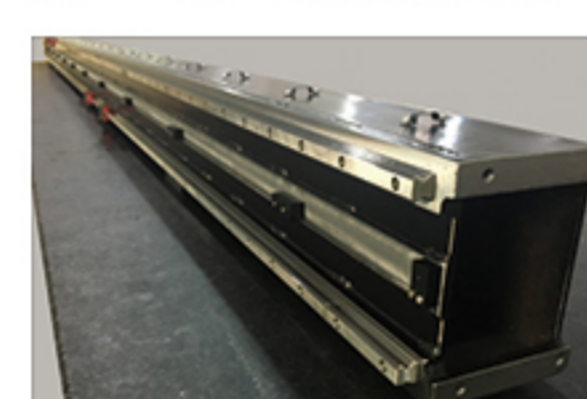
2. Industrial Y Structure Tungsten Steel Frame
Constructed with industrial Y frame and structure, the machine is heavy duty and built to last.



3. Dual Anti-crash System
Mechanical anti crash device effectively stops the carriage to protect print head once it touches the media; Hydraulic stoppers avoid the damage of the head carriage once it accidentally crashes to the left or right end.



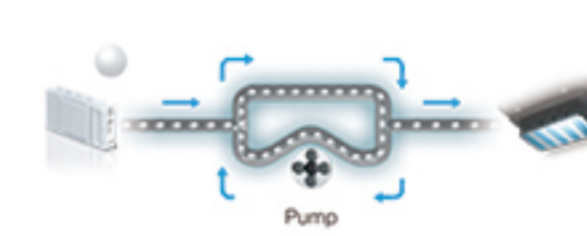
4. Industrial Servo Motors
High performance of industrial servo motors provide excellent control of the movement of the shuttle.



5. Cross Beam Adopts Steel Frame with Dual Guide Rails
Dual linear motion guide provides highly stable environment at high speed printing.



6. High performance lead Screw Introduced from Taiwan Works in Y-axis
Both sides of the printer are equipped with industrial driving screws which ensure high accuracy of the print position and enhance its durability.



7. White Ink Circulation System
Keeps color particulates in motion in a bid to improve stability and dispersions of the pigments in the fluid reservoir and ink path.



Vacuum system



Ricoh G6 print head



Negative pressure ink supply system



German ColorGATE RIP



Bi-direction printing

Applications



White and Varnish color Fluorescence color 3D Relief Printing



White color is used as an undercoat to enhance the brightness of the image of the transparent materials. Varnish color highlights a certain part of the prints and offers a feel of quality.



Fluorescence colors gives extra glow in color makes the print bright and shine.



Embossment printing is a three dimensional effect that emphasizes a particular area of the design. It's a value added feature that provides excellent touch to your fingertips.

All trademarks or registered trademarks are property of their respective owners. Specifications are subject to change without notice. Inkjet printers print using extremely fine dots, thus colors may vary slightly following replacement of the printing heads. Also note that using multiple printer units, colors may vary slightly among the units due to slight individual differences among the unit.